

## F. UCHIYAMA & CO., LTD

Noboru Uchiyama

Yokohama, Japan

E. info@f-uchiyoama.com, Ph. +81 45 663 6677



### Mitsubishi

**FD200**

**1992**

Yokohama, Japan

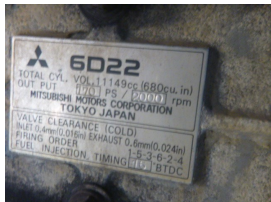
**onQ-65304**

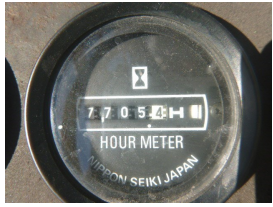
HEAVY LIFTERS & HANDLERS - HIGH CAPACITY FORKLIFTS  
USED - SALE

<b>Date Listed</b>	16 Jul 2025
<b>Serial Number</b>	F11-10126
<b>Machine Hours</b>	7705
<b>Power Type</b>	Diesel
<b>Lift Capacity</b>	20,000 kg(44,092 lb)
<b>Mast Type</b>	Duplex (2 Stage)
<b>Maximum Lift Height</b>	3,000 mm(118 in)
<b>Tyre Type</b>	Pneumatic
<b>Machine Height</b>	3,930 mm(155 in)
<b>Machine Condition</b>	Condition GOOD ***

### ADDITIONAL INFORMATION

2440mm Fork





## BETTER, SMARTER, MORE FOCUSED, EASY AS.

- Machinery-onQ Europe is a platform for the sale and acquisition of both new & used mobile machinery in Europe which comprises Western Europe and Eastern Europe, including European Russia.
- The platform features forklifts, warehouse equipment, container handlers, log handlers, aerial work platforms, port cranes, tow trucks, terminal tractors, industrial sweepers and forklift attachments.

This platform is produced by FORKLIFTACTION



**Machinery-onQ is a Business Platform by ForkliftAction Media.**

<https://europe.machinery-onq.com/machine-heavy-lifters-handlers-high-capacity-forklifts-mitsubishi-fd200-1992-used-sale-japan/65304>

© ForkliftAction Media 2025