

## F. UCHIYAMA & CO., LTD

Noboru Uchiyama

Yokohama, Japan

E. [info@f-uchiyoama.com](mailto:info@f-uchiyoama.com), Ph. +81 45 663 6677



### Mitsubishi

### FGE35AT

2013

Yokohama, Japan

**onQ-65940**

FORKLIFTS - COUNTER BALANCE ICE

USED - SALE

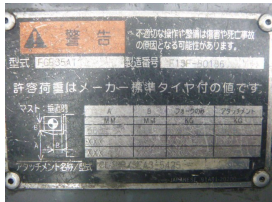
<b>Date Listed</b>	20 Jul 2025
<b>Serial Number</b>	F13F-80186
<b>Machine Hours</b>	13393
<b>Power Type</b>	Petrol / Gasoline
<b>Lift Capacity</b>	3,500 kg(7,716 lb)
<b>Mast Type</b>	Triplex (3 Stage)
<b>Maximum Lift Height</b>	5,000 mm(197 in)
<b>Tyre Type</b>	Solid / Puncture Proof
<b>Machine Condition</b>	Condition GOOD ***

**Machine Features** Attachment included

### ADDITIONAL INFORMATION

Paper Roll Clamp





## BETTER, SMARTER, MORE FOCUSED, EASY AS.

- Machinery-onQ Europe is a platform for the sale and acquisition of both new & used mobile machinery in Europe which comprises Western Europe and Eastern Europe, including European Russia.
- The platform features forklifts, warehouse equipment, container handlers, log handlers, aerial work platforms, port cranes, tow trucks, terminal tractors, industrial sweepers and forklift attachments.

This platform is produced by FORKLIFTACTION



Machinery-onQ is a Business Platform by ForkliftAction Media.

<https://europe.machinery-onq.com/machine-forklifts-counter-balance-ice-mitsubishi-fge35at-2013-used-sale-japan/65940>

© ForkliftAction Media 2025